

ARE YOU READY  
FOR THE CHANGE?



COBALT X2  
NEW-GENERATION MONITORING SYSTEM

# SIMPLICITY

COMPLIANCE

# PERFORMANCE

COST OPTIMIZATION

## COBALT X2



2.4" color touch-screen

Temperature, relative humidity, %CO<sub>2</sub>, 4-20 mA, 0-5 V, 0-10 V, dry contact

Battery or AC power (via USB port)

LoRaWAN™ long-range wireless communication



Data collection from up to 4 Bluetooth® modules



4 digital sensor channels, OCEASOFT Smart-Sensors

Low power consumption and long battery life

# SIMPLICITY

A central product in OCEASOFT's Cobalt X range, Cobalt X2 integrates the latest technology innovations to optimize monitoring for your sensitive products.

While respecting the beauty of simplicity in action, Cobalt X2 features many advanced functions, including very long wireless range, a color touch-screen, 4 distinct sensor channels, a broad range of all-digital wired sensors, and fully wireless sensors. Designed to keep your daily tasks easy, the Cobalt X2 solution and powerful OCEAView companion web application ensure smooth installation, advanced alarm management, and easy access to all your data in full compliance with applicable regulations.

- | Color touch-screen for efficient interaction
- | Rich display and feature set
- | View and acknowledge alarms directly on module
- | Wired or entirely wireless sensors
- | Automatic sensor detection

- | **OCEASOFT Smart-Sensors** with calibration parameters stored in their own memory to simplify recalibration
- | Cobalt X2 firmware update wirelessly **via Bluetooth®**





## 4 distinct channels for Bluetooth® wireless sensors and wired OCEASOFT Smart-Sensors

### Wireless sensors

- | Temperature sensors featuring Bluetooth® to communicate with Cobalt X2
- | Easy setup without having to run cables through your equipment

### Temperature range from -200°C to +200°C

- | Temperature and relative humidity
- | %CO<sub>2</sub>
- | 0-5 V, 0-10 V, 4-20 mA
- | Dry contact
- | Differential pressure\*

# PERFORMANCE



## LoRaWAN™ long-range wireless technology

- | Up to 16 km (10 miles)\*\* range covering very large sites
- | Easy setup with **automatic connection to LoRaWAN™ network**
- | **Robust** communication
- | **Low power consumption**

\* Available soon

\*\* Depending on environmental conditions and receiver antenna performance

# Universal OCEAView web application

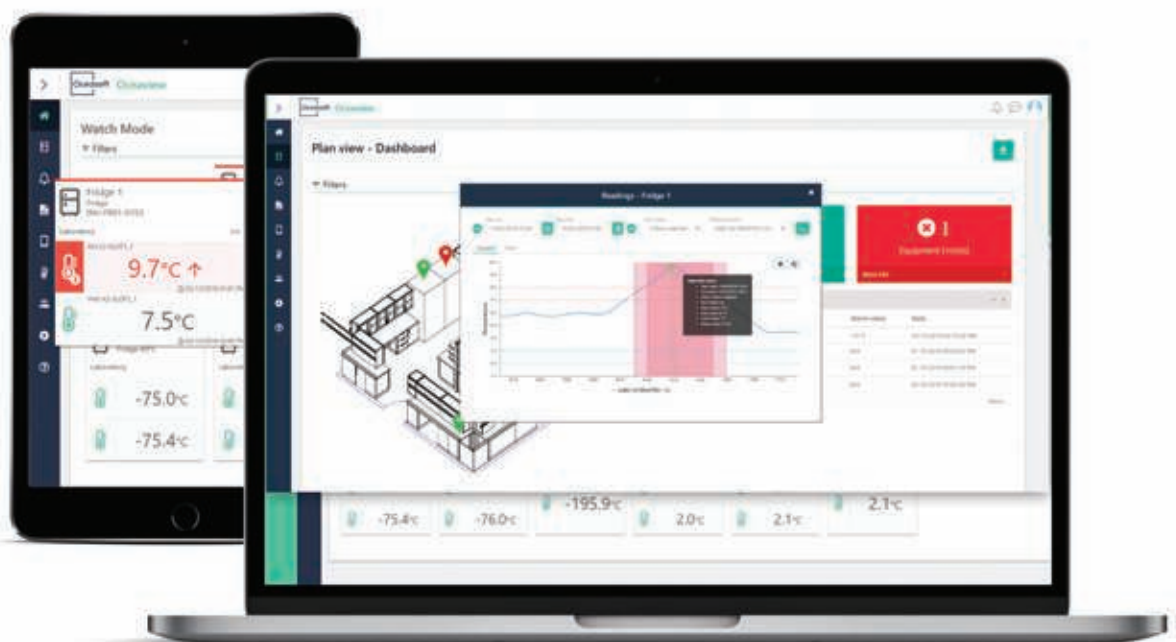
- | Supports fixed and mobile data loggers
- | Web application on Cloud or customer server
- | Instant access to alarms, readings, and graphs
- | Remote data access
- | Flexible organization by site, department user, equipment, criticality...

## Fast handling for your alarms and alerts

- | Several configurable alarm limits (3 high + 3 low)
- | Alerts by e-mail, SMS/text, or telephone call
- | Audio alarm when on AC power, alert in case of power outage
- | Configurable alert schedules (day, night, rotating shifts, holidays, weekends...)

## Auditable and customizable reports

- | Audit trail, secure user-level access control, compliant with FDA 21 CFR Part 11 guidelines
- | MKT (mean kinetic temperature) management



# COMPLIANCE AND QUALITY



ACCREDITATION  
COFRAC  
N° 2-1987  
COVERAGE  
AVAILABLE ON  
[www.cofrac.fr](http://www.cofrac.fr)



## Compliance

- | EN 15189
- | FDA 21 CFR Part 11
- | GxP

## Quality

- | ISO/IEC 17025 in-house COFRAC-accredited laboratory and NIST-traceable calibration
- | Company certified ISO 9001
- | IQ / OQ
- | Validation Pack

---

**OCEASOFT has been developing connected solutions** for over 18 years to monitor critical physical parameters such as temperature, humidity, CO<sub>2</sub> levels, and more. **Our mission is to help you ensure the quality and compliance of your sensitive products across the entire storage, production, and transport chain.** With a comprehensive vertical offering from sensor reading to data integration into customers' information systems, **OCEASOFT gives you the benefit of its expertise in three key areas:** sensors and calibration, wireless transmission, and related web and mobile application development.

---

Oceasoft™

**OCEASOFT SA.**  
720 Rue Louis Lépine  
34000 Montpellier - FRANCE  
Tel. +33 (0)4 99 13 67 30  
Fax +33 (0)4 67 42 84 13

